

Panther 5/15/70

1704

The hemlock grove along the trail between Woodland Junction Giant Ledge lean-to has one tree 25" x 60' with its top broken.

The ledge^{low} on the NWSlope of Wittenberg-Cornell above^{E of} the Cornell Fork of Woodland Creek dips about 5° to the south and is continuous for several hundred yards; more obscure ledge above also dips gently S.

Viewed from Giant Ledge summit, Woodland Valley is in almost or full leaf on 5/15, the base of G-Ledge 1/2, the summit of Panther with a faint yellow-green tinge of opening buds.

Hemlock is a feathery blue-green and glaucous, with the upper lateral branches near-horizontal to drooping, from the distance. Spruce is a brighter yellow-green, with the upper lateral branches upturned. The comparison is clear from the G-Ledge lookouts, as both species grow at the east base. There is a large hemlock grove southeast of the Giant Ledge lean-to, to the north of the Woodland Valley trail, just below the crest^{of the col} on the east slope. A hemlock grove is on Fork Ridge and scattered^{hemlock occur} on the east spur of Panther.

The knob 3140' SE of the Woodland Valley Junction, on the ascent to Slide, is dominated most likely by balsam. [3060' knob is Hemlock in 1973]

Several dead spruce are down blocking the trail on the crest of Giant Ledge. Trillium und, Vib. aln., Amel in flower. Cory. Maianthemum in bud. Coptis, Claytonia caroliniana. Fern glades (still dead & prostrate) have Maianthemum, Erythronium, Claytonia emerging above the 1-2" high fiddleheads, after having pushed through the mat of dead rachises.

A treeless spot about 100 x 50 feet in area occurs just above and south of the G.L.-Panther col on E side of trail. Veratrum indicates poor drainage, but no standing water. Dead fern with Claytonia

Check there
Checked
in 1973

Transect #1

(2)

1705

Erythronium, a few YB seedlings to 2 ft, 3-leaved Rubus (=hispidus?)
Red-breasted grackle at beginning of Panther ascent.

On S slope Panther, Deschampsia & Claytonia abound. The wet flat
is dominated by Veratrum & Claytonia, and YB, some fir, Hydro-
phyllum, and Dicentra.

Crest of Panther 48° at 1 PM, compared to 52° on G.L. at N.

Amel-bart & Vib aln, Erythronium, Claytonia & Trillium erectum in flower.

Virgin spruce on the N end of Panther crest, then again on N spur
as a larger tract. Phoenixia Bridges & Panther Cr. Hollow visible
from E lookout on Panther summit.

Canopy is open, YB not in leaf yet. Fir repr. prolific, but many
dead old fir are scattered among the young - up to 12" x 25'.

A few young spruce. Nothing grows under the dense Vacciniums.

Coptis occurs in the wetter spots. Both species of birch present -
YB & PB. Snow patches 1 yard across at the base of north-
facing ledges.

Open Deschampsia area just S of larger ^{virgin} spruce tract. A 22"
spruce down across the trail is ca. 165 years. A 22.4" spruce still alive just
N of it. An 18.6" DBH spruce, downed & cut 20' above the hole where
it is 13.1" is 150 years. A 27" DBH stump is 10' high. Kyphum
imponens dominates fallen logs. The spruce reproduces commonly;
but there are no old fir and only a few young fir.

A fern glade is at the N end of the spruce grove in hardwoods,
with Claytonia profusely in bloom, also some Maianthemum,
Asteracum, Solid. Macro, Deschampsia. 2nd small spruce grove on
small knob south of the 3440' subsummit. On the subsummit is a young YB -

1706

red maple forest with a few older fir, with open fern glades & a lookout into the head of Fox Hollow on top a 50' ledge. Fir is common & scattered, but hardwoods dominating.

A series of ledges leads to the north pinnacle 3380 with stunted birch, some fir to 20', Vare. abundant. A large snow bank below a NE slope ledge.

Lower down, where hardwoods are taller and fir no more, there is a 27.9" YB. Trees in half leaf as trail descends off the ridge crest and down the E slope. By 2680', there is a mature hemlock forest with diverse ground cover wildflowers and sugar maple to 27". The trail becomes level on a terrace for a stretch and even climbs slightly. Viola blanda, canadensis, and pubescens common. Trail is clearly an old bark road, but where the ^{near} 1935 fore trail joins it further up is obscured. The trail steepens downward and the first ^{scattered} hemlocks appear.

* about
2800'
elev.

Grant Ledge 5 ~~10~~/15/70

170-8

Dead Beech sapling above brook crossing (bridge out) about 1 mi from Winnissock is 2" and 10-12 years old [see transect #3]

Enter State land beyond old log road that comes in from S and the 3rd (last) log-load or truck-turn clearing.

Hemlock grove north of Woodland Valley Trail Junction has 25" tree on trail, 26" a few feet to NW. Hemlock logs to 15". About 2 dozen trees scattered along the trail, escaping the peelers. Some younger, but no sapling reproduction. A cut 24" hemlock is ca. 200 years.

Hardwoods in col are mostly younger & somewhat stunted, although there are some large cherries as soon as the land rises N to Grant Ledge. A 28" cherry just below upper junction of truck trail ledge bypass. Sugar to 24". Several ash below lean-to, one lightning-struck on trail 22" -indicating thicker soil on lee side of G. Ledge? Other ashes to 20".

Sugar maples to 20" at Lean-to, but drop out at that point.

The E slope of Slide has a 35° slope as measured from Grant Ledge by clinometer

The cleared spruce on G-L. Summit between 3rd & 4th lookouts is 15" & 110 years. It grew to 3" in 1st 10 years, then slower & slower. A 10 1/2" cut spruce is 95 to 100 years.

Scattered young spruce to 6" on Grant Ledge crest.

The highest pt on G-Ledge, west of cut & cleared spruce blowdown is open with much bare rock: *Dennstaedtia*, *Polygonum*, scrub MB, Pin Cherry, Red Maple, *Vaccinium myrt*, black cherry, 1 hemlock, 1 spruce, 1 dead fir

Scattered young fir occur in virgin spruce at base of ledge

Wow!
Noted in 1977
(3/29/80)

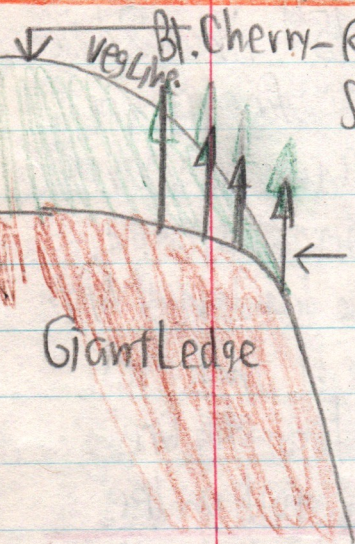
6

1709

as seen from above. Firs appear blue-green.

The hemlock grove SSE of Giant Ledge has an azimuth of 163° ($S17^\circ E$). It may lie near the Woodland Valley trail.

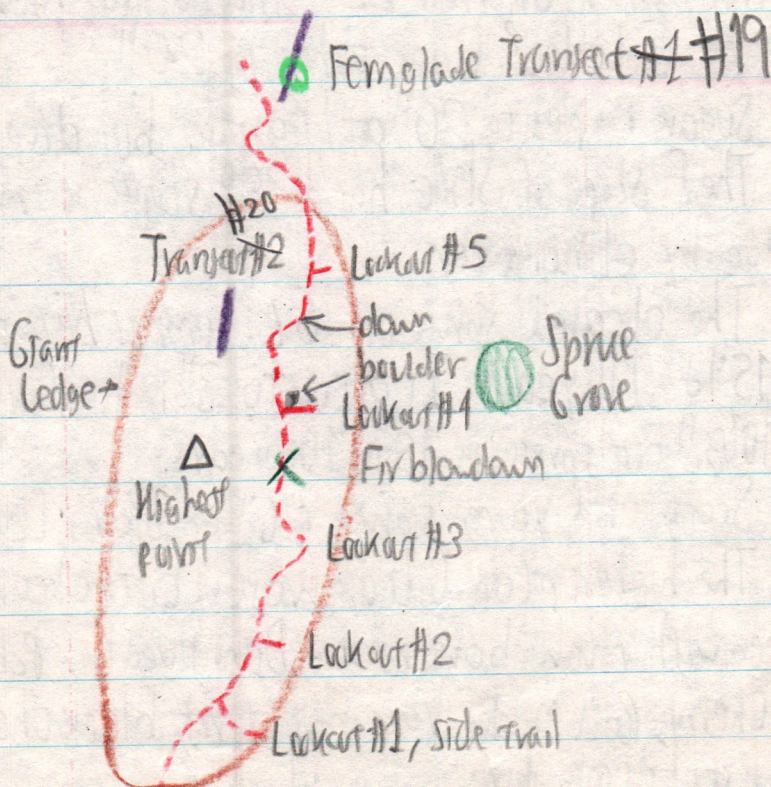
27 years for a 4" Moosewood cut in hemlock grove on trail below lean-to.



Spruce & fir mostly on crest

Vaccinium, Nematophus, *Ilex montana*, Prunus penn, Sorbus, Rhododendron roseum, on crest of ledge only.

(Looking north)



7

Panther Mountain Trail Plan

170-10

	Location	Pressure		MAP ELEV.	INTERP ELEV.
		UP	DOWN		
A	Giant ledge - Panther Col	27.46	27.40	3000	
B	Spur trail to spring on E	27.38	27.34		3070
C	Trail E-W, short level, ^{partial S} lookout	27.29			3160
D	Turns NdW, top 10' ledge, ^{2nd partial S} lookout	27.24			3210
E	Turns E 2nd time on level; ^{SE} lookout	27.21	27.15		3250
F	Trail on E side of flat spur	27.18	27.13		3280
G	S lookout at 6" Fir, trail NW	27.08	27.05		3370
H	SWAMP - Transect #4	27.06	27.02		3390
I	Short flat ledge top, ^S partial lookout	27.02			3430
J	Trail joins E, W lookout	26.97	26.94		3470
K	Cairn to E, SW lookout	26.93	26.87		3530
L	Up 10' ledge on E, view of Slide	26.89			3570
M	Trail turns E to skirt 10' ledge enters PB	26.85	26.80		3610
N	Trail parallels ledge on E, S end	26.83	26.78		3630
O	Trail on E crest of ledge	26.80	26.76		3650
P	9" Fir cut stump, trail NW onto crest trail marker on it.	26.75	26.78		3690
Q	Summit Lookout	26.72	26.69	3720	

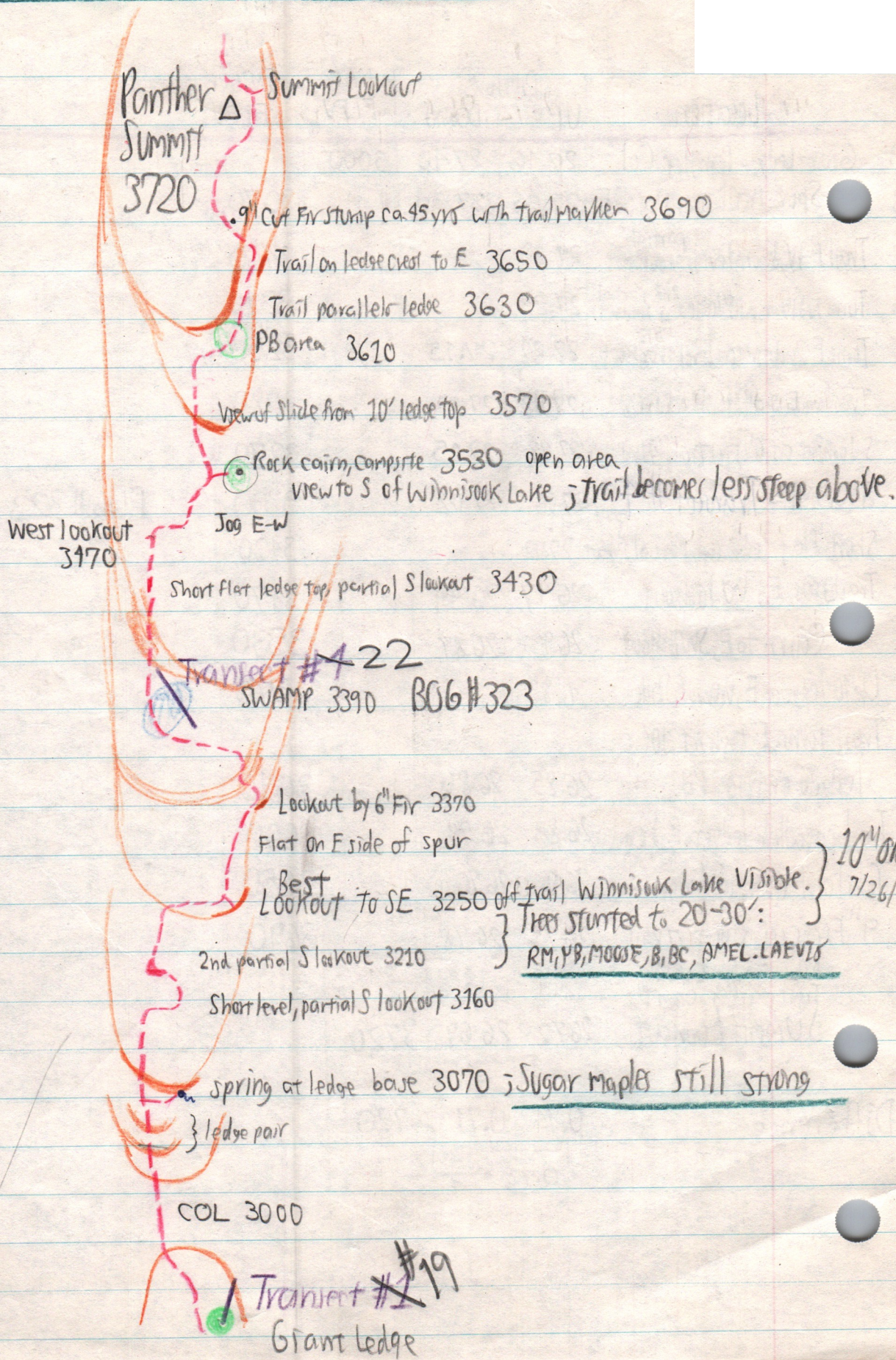
BOG # 323

Difference

0.74	0.71	→ 720
⏟		
0.72		←

South Slope Panther

1707 (8)



North Slope Panther

170-12

Location	UP Pressure	DOWN	MAP. ELEV.	INTERP. ELEV.
Summit Panther	26.72	26.67	3720	
North Spur hardwood flat	27.02			
Transect #6 on top of pitch			3420	
Trail follows ledge west, then ascends it	27.00			
Descend through gap in ledge		27.00 ^{TOP}		
Open area - view of spruce to north				
Col	27.03	27.04		
Enter spruce	27.04			
Transect #5			3400	

170B

Transect #5 Hypnum imbricatum on Spruce logs
Spruce Grove

Knoblet

Col-let

Open areas view of large spruce to north

Trail descends ledge through mossy notch or gap

Trail on crest

Trail below east of crest
10' ledge parallels trail

Balsam on exposed N end of flat
A few dead at Transect #6.

Transect #6
ELEV. 3420

Long hardwood flat

Some large PB here

steep descent to north

Much more recent disturbance? Small PB thicket

Older pole stand of dense fir; a few spruce
2-4" x 20 ft.

1950 Hurricane Blowdown fir thicket
Former large Fir-PB

Panther Summit
3720

Lookout ELEV. 3700

Hemlock 1" x 5 ft.

Cornus canadensis, Vaccinium myrtillus, Nematophora on ledge crest along trail.

East Lookout to Panther Kill.

